



**Dean's Office**

School of Education  
e-mail: [sedu@nou.edu.ng](mailto:sedu@nou.edu.ng)  
Tel: 01-8910538; 01-2712652  
Fax: 01-271-2665

**Dean's Office**

School of Science & Technology  
e-mail: [sst@nou.edu.ng](mailto:sst@nou.edu.ng)  
Tel: 01-2712654; 01-8910537  
Fax: 01-271-2665

**Director's Office**

Centre for Continuing Education &  
Workplace Training  
e-mail: [ccewt@nou.edu.ng](mailto:ccewt@nou.edu.ng)  
Tel: 01-2712651; 01-8910539  
Fax: 01-271-2665

**ID card Issuing Office**

Computer & Networking Services  
e-mail: [cns@nou.edu.ng](mailto:cns@nou.edu.ng)  
Tel: 01-2712657  
Fax: 01-271-2665

**The Director**

Regional Training and Research Institute  
for Open and Distance Learning  
(RETRIDAL)  
e-mail: [retridal@nou.edu.ng](mailto:retridal@nou.edu.ng)  
Tel: 01-1-271-2661; 01-891-0540  
Fax: 01-271-2665

**Federal Capital Territory, Abuja**

National Open and Distance Learning  
 Planning Office  
 No 5 Dar-Es-Salaam Street  
 Off Aminu Kano Street  
 Wuse II – Abuja  
 Garki, Abuja.  
 Tel: 09 - 6711929  
 Fax: 01-271-2665

**Kaduna**

National Open University of Nigeria,  
 Kaduna Campus (former NETC)  
 Riga Chikun-Kakduna-Zaria Road, Kaduna  
 Tel: 062-314363 062-314489  
 062-313973 062-312720

**Dean’s Office**

School of Arts & Social Sciences  
 Email: sass@nou.edu.ng  
 Phone: 01-8910535; 01-2712653  
 01-8910536, 01-2712658  
 Fax: 01-271-2665

**Dean’s Office**

School of Business & Human Resource  
 Management  
 e-mail: sbhrm@nou.edu.ng  
 Tel: 01-8910536; 01-2712658  
 Fax: 01-271-2665

**CONTENTS**

Vision .....4  
 Mission .....4  
 Objectives .....5  
 How it all started.....6  
 Resuscitation of the National Open University of Nigeria .....7  
 Justification for Open and Distance Education in Nigeria .....8  
 University Logo .....9  
 Administrative frame work .....10  
 Administration .....12  
 The Study Centres .....14  
 Map of Nigeria showing locations of Study Centres .....15  
 Academic Centres .....16  
 Programmes at the National Open University of Nigeria .....17  
 School of Arts and Social Sciences .....17  
 School of Business and Human Resources Management .....18  
 Centre of Continues Education and Work Place Training .....19  
 School of Education .....19  
 School of Science and Technology .....20  
 Student Enrolment .....21  
 Instructional Modes .....22  
 Instructional Delivery .....23  
 Instructional System in NOUN .....25  
 Learner Support Services .....26  
 Course Registration .....28  
 General Studies Courses .....30  
 Quality Assurance .....31  
 Quality Assurance of Programmes and Courses .....32  
 Strategic Plan .....33  
 SARVICOM .....39  
 For Further Information .....41

## Vision

The National Open University of Nigeria is to be regarded as the foremost University providing highly accessible and enhanced quality education anchored by social justice, equity, equality, and national cohesion through a comprehensive reach that transcends all barriers.

## Mission

To provide functional cost-effective, flexible learning, which adds life-long value to quality education for all who seek knowledge.

## For Further Information:

### Academic and Admission Matters

The Academic Registrar,  
National Open University of Nigeria,  
14-16 Ahmadu Bello Way,  
Victoria Island, Lagos  
e-mail: [enquiries@nou.edu.ng](mailto:enquiries@nou.edu.ng)  
[centralinfo@nou.edu.ng](mailto:centralinfo@nou.edu.ng)  
Tel: 01- 2712661  
Fax: 01-271-2665

### Visitors & Information Call Centre

The Head  
e-mail: [centralinfo@nou.edu.ng](mailto:centralinfo@nou.edu.ng)  
Tel: 01-4820720 - 2, 01-2712664  
Fax: 01-271-2665

### Learner Support Services

The Director  
Learner Support Services,  
E-mail: [dlss@nou.edu.ng](mailto:dlss@nou.edu.ng)  
Tel: 01-8188850  
Fax: 01-271-2665

### General Information

The Director  
Media and Information,  
e-mail: [dmi@nou.edu.ng](mailto:dmi@nou.edu.ng)  
Tel: 01-08903705; 01-2712663-4  
01-4820720-2  
Fax: 01-271-2665

- Petition the Study Centre Manager;
- Petition the Dean/Director of the academic unit concerned;
- Petition the university Senate;
- Petition the Vice Chancellor;
- Petition the Council;
- Petition the Hon. Minister of Education; and
- Seek redress at the law court

## Objectives

In addition to the broad vision and mission statements, some of the major objectives of the National Open University of Nigeria are to:

- ensure equity and equality of opportunities in education generally but specifically in university education;
- provide a wider access to education generally but specifically university education in Nigeria;
- enhance Education For All and life- long learning;
- provide the entrenchment of global learning culture;
- provide instructional resources via an intensive use of information and communication technology;
- provide flexible, but qualitative education; and
- reduce the cost, inconveniences, hassles of and access to education and its delivery.
- enhance more access to education

## How it All Started.....

Since independence, Nigeria has continued to demonstrate an irrevocable and unwavering commitment to education as tool for national and personal development, and as an inalienable right of her citizens. The socio-economic dimensions of providing education for all are huge, bearing in mind the population of the country and the competing basis for resources amongst the compelling needs of the society. It must have occurred to the then Federal Government, of Alhaji Shehu Shagari that the ever growing demand for education by her people cannot be met by the traditional means of face to face classroom instructional delivery. It did appear that the way forward was to embrace open and distance education. Thus, by an Act of the National Assembly in 1983, the National Open University of Nigeria (NOUN) became established in July 1983. However, it was closed down a few months later in 1984 by the Federal Military Government that overthrew the civilian government of Alhaji Shehu Shagari.

## SERVICOM

The university has set up a SERVICOM unit. The SERVICOM, *Service Compact with all Nigerians* is a comprehensive plan of action for the running and sustaining of a public service agency with which she could be assessed. In setting up this unit, the university is interested in democratising the entire process of running its various operational activities such that her major clients, the students, public and the stakeholders for whom these services are provided are given some measure of control over the quality of services being delivered and from there pass judgements.

### Output Control Measures

Intrinsic in the charter of service, is the right of the citizens of the country to seek redress when any of the services as contained in the SERVICOM Charter fail to meet their expectations. If such a situation should arise, the university has provided avenues for redress for any dissatisfied student and or stakeholder by doing any of the following:

## Strategic Aims

To collaborate with institutions and organisations within the West African sub-region for training and development in ODL through the activities of RETRIDAL; and enhance the growth and development of NOUN and its staff through partnerships with International Development Partners and professional organisations and other open and distance institutions worldwide such as COL, UNESCO, NEPAD, WADE, ACDE, ICDE, UNISA, OUUK, USQ, OUHK, IGNOU.

To develop materials suitable for international students beginning with the West African through the African region to the rest of the world in keeping with the trend in cross border education and the need for NOUN to have an international presence in ODL.

## Resuscitation of the National Open University of Nigeria

Many years after the closure, the *compelling reasons* that informed the earlier establishment of the university were still confronting the country. Several other reasons had also emerged. These include the need to fill the vacuum created by the profit oriented outreach programmes of many conventional universities in the country; the necessitating needs for economic funding of education, and the need to take advantage of emerging developments in the field of information communication technologies which have revolutionised the techniques and methods of instructional deliveries in the distance learning mode. Thus, in 2002, the National Open University Act of 1983 which was suspended in 1984, was reactivated.

This paved the way for the resuscitation of the National Open University of Nigeria (NOUN) as we have it today by President Olusegun Obasanjo. This rebirth has renewed the focus to make education available to as many people as have the ability, and are willing and ready to benefit from the quality education provided through flexible and affordable distance learning.

## Justification for Open and Distance Education in Nigeria

In Nigeria, the adoption and deployment of open and distance education delivery systems is just on several grounds. These include:

- Provision of Education For All and Promotion of Lifelong Learning
- Filling the gap created by the closure of Outreach/Satellite Campuses
- Cost effectiveness
- Improved economics of scale
- Flexibility of delivery system
- Maximum utilisation of academic personnel
- On the job teacher training
- Poverty eradication
- Vocational and life long education
- Provision of non-formal education
- Reaching the 'unreached'.
- Avenue for propagation of national orientation

## Strategic Direction

Offer new and locally relevant programmes, attain full development of the ICT network within and amongst the NOUN systems, and provide the best possible learning experiences for our students through the use of a range of contextually relevant media and technologies;

Build upon the e-learning initiatives already begun with a gradual expansion to full delivery of courses online by the end of the Plan period;

Encourage increased use of students support services through the completion of ongoing renovations and refurbishment of the first phase of study centres while the second stage of study centre development to include all states and selected study centres reflecting concentration of students will be embarked upon.

Lay the foundation for quality research and the identification of research priorities essential for a new and emerging open university; to enhance excellence in the design, development and provision of instructional materials and tutorial facilities as well as initiate towards the tail end of the Plan period our emergence into the national and international scene of excellence in ODL research.

ing at the various Study Centres, and encourage use of appropriate multi-media technology to achieve delivery of instructions. In order to attract robust participation of the stakeholders, part of the strategy would be to implement conducting workshops, seminars, short term courses, conferences for groups and individuals at educational institutions and various workplaces and to engage in strong advocacy.

### Strategic and Operational Priorities

The immediate priority is maintaining the provision of instructional materials to the students in any of the delivery format at the respective study centres and the continuing re appraisal of the relevance of the various programmes to meet prevailing demands of the society. To achieve this operational strategy, the reward system will accommodate increased responsibility for staff. The University will also improve the working environment for its staff and provide them with modern and effective working tools to enable them achieve job actualisation.

### The NOUN logo



*The NOUN logo is open at the top to emphasise the open nature of the university. It carries the national emblem to confirm that it is a national university; the open book at the centre indicates that you can work and learn at the same time and that education can even be brought to you at your workplace. The colours of green and white are the national colours and the red colour carrying the name of the university underscores the distinctiveness of the institution in Nigeria.*

## Administrative Frame work

The University Act of 1983 is the operating basis for the actualisation of the re-born NOUN. The University Act provides for amongst others, that the President of the Federal Republic of Nigeria is the Visitor to the university. This is similar to the custom in the conventional universities in the country. In addition, there is a Council headed by the Pro-Chancellor whose members are constituted by the Visitor through the Honourable Minister of Education. Presently, the Council is made up of 15 appointed members aside from the internal members of the university and representatives of designated agencies of government.

The academic activities of the university are run through the Senate which has the Vice Chancellor as its Chairman and all Professors and Programme Leaders as members. The administrative machinery of the university is enhanced through Directorates which at the moment are:

## Expectations for clients

Certain expectations are expected from the NOUN as it offers its services and products. These are hitch free admission for all candidates into the appropriate programmes of the university according to individual qualification and/or professional standing and experience; attainment of delivery target of service delivery within one week of respective target period; prompt response to enquiries from learners through the respective organs of the universities such as the call centre office, public affairs, E- mail and Internet; and not the least producing well grounded graduates found fit in learning and character for self-realisation and labour market.

## Implementation Strategy

The NOUN would have to seek collaboration with professional bodies/ organisation to develop learning materials and produce well instructionally designed course materials as study packs for students. Because of the special features of ODL, the NOUN would have to ensure provision of learner support services through use of study centres at various site locations in the country; employ competent instructional facilitators to impart knowledge at these study centres; and use student group learning activities, presentations, etc. to enhance learn-

Our vision is that when the plan is successfully carried out, the NOUN will be able to justify its leading role as a leading ODL centre of learning in the world.

*For our learners*, this means an opportunity to experience a flexible, interactive and student centred learning environment, of well coordinated and integrated set of instructions that will lead to awards of certificates, diplomas and degrees competencies that will equip them to face the world with the confidence.

*For staff*, the vision means their competencies will be empowered via provision of appropriate tools and methodologies that will accommodate the integration of the various delivery methods available for modern provision of learning in an ODL setting.

*For the university as a whole*, the vision implies improved administrative efficiency and service, greater expansion and collaborative opportunities, and making the University an exemplar in the demonstration of the deployment of ODL to knowledge and skills acquisition in all her programmes and activities.

- Media and Information
- Legal and Protocol
- Learner Support Services
- Computer and Network Services
- Information Technology Support
- Physical Planning and Development
- Academic Planning
- Course Material Development
- Finance and Accounts
- Human Resources; and
- Academic Registry

## Administration

The university has the following physical structures:

### National Open University of Nigeria Headquarters

The NOUN Headquarters is at 14–16 Ahmadu Bello Way, Victoria Island, Lagos. This is the thirteen storey glass building, which served as the former Federal Ministry of Education in Lagos. It houses the administrative machinery of the university comprising the offices of the Vice-Chancellor, the principal officers of the university, and the school's and academic centres through which the academic programmes are delivered.

### Abuja Office

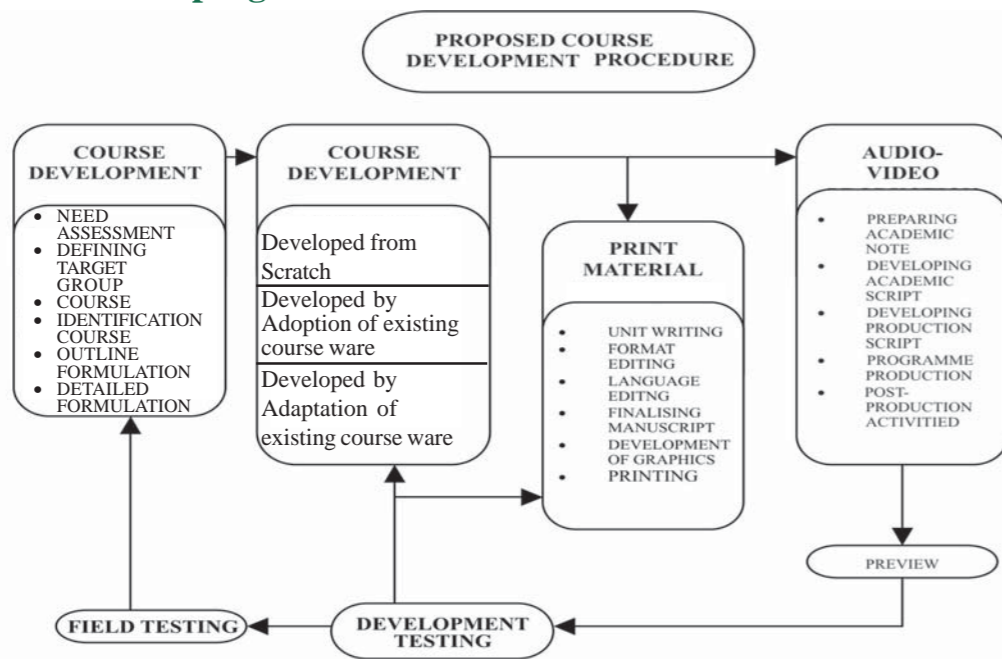
The National Open and Distance Learning Planning Office (NODLP) at No 5 Dar-Es-Salaam Street, off Aminu Kano Crescent, Wuse II - Abuja, caters for the centralised planning,

## Strategic Plan

The concept and practice of Open and Distance Learning (ODL) in Nigeria has taken new dimensions within the last four years especially with the resuscitation of the National Open University of Nigeria (NOUN). This calls for a strategic plan that entails a complete paradigm shift from the traditional mode of learning to a combination of face to face, learner-centred, technology-assisted, interactive, just-in-time learning, with no social bias or hindrances. The NOUN plan proposes to develop in five major areas:

- **Enhance student enrolment in programmes being offered in the university**
- **Create demand-driven academic programmes relevant to the needs of the society**
- **Create linkages with other universities and industrial concerns**
- **Achieve staff competencies in ODL**
- **Deploy the use of innovative technologies in the delivery of her operational services.**

### Quality assurance of programmes and courses



coordination and regulation of Open and Distance Learning programmes nationwide and also serves as a training and capacity building centre. The same structure presently serves as the NOUN annex which oversees the network of activities in the Northern part of the country as well as liaises between the Federal Government and other agencies situated in Abuja.

### Kaduna Campus

The NOUN Kaduna campus is situated along Zaria-Kaduna Express way, Kaduna. This was the former National Educational Technology Centre (NETC) ceded to NOUN to facilitate the delivery of instructional materials through the use of media, television, and state of the art technology for all the audio-visual formats. When fully redeveloped as an instructional multi-media campus, it should produce materials for all levels of education to serve states, federal and other establishments

## The Study Centres

These are the main centres of student learning activities at the NOUN and where the Federal presence is being articulated. These centres are thus the backbone of the distance learning methodology of the university. From the initial 18 temporary Study Centres approved by the Federal Government for take off of the university, the NOUN now has 27 Study Centres spread across the length and breadth of the country in the following states: Lagos, Ogun, Oyo, Ondo, Edo, Bayelsa, Rivers, Cross River, Anambra, Abia, Imo, Kwara, Kogi, Kaduna, Enugu, Kano, Katsina, Sokoto, Plateau, Bauchi, Yobe, Osun, Adamawa, Benue, Maiduguri, Kebbi and Abuja. In addition, the university has special study centres which cater for specialised groups such as the prisons and armed forces personnel. It is the hope of the university that every local government area in the country would eventually have a study centre.

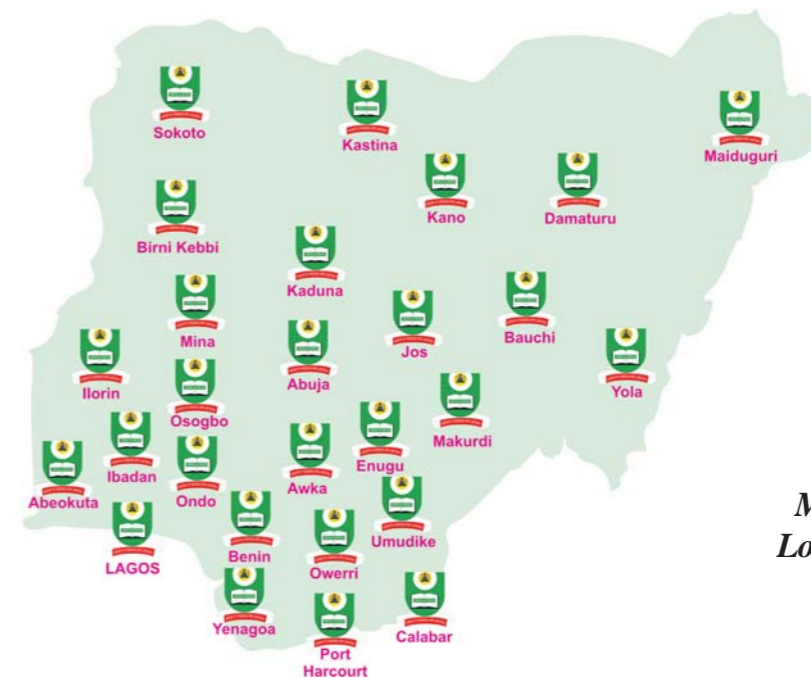
## Quality Assurance

Quality is the watch-word at the National Open University of Nigeria and it underpins every aspect of the experiences prepared for a student who has decided to be instructed at the university. As it is for all Nigerian Universities to be assessed through accreditation by the National Universities Commission, (NUC), the National Open University of Nigeria will be part of these accreditation exercises. The programmes we offer, our teaching and degrees awarded are all subject to the same quality assurance as all Nigerian Universities. Besides, due to globalisation, the NOUN collaborates with the Commonwealth of Learning (COL) in Canada, the International Council for Distance Education (ICDE), the African Council of Distance Education (ACDE) and well established distance and open universities of the United Kingdom, Hong Kong, India, Australia, South Africa and the Africa Virtual University in Kenya.

As an illustration, the procedure for the development of a course at NOUN is modelled after IGNOU's and is illustrated as:

**General Studies Courses:** Regardless of the academic programme at the undergraduate level and to some extent postgraduate level, and the teacher in which a student is enrolled, all first year undergraduate students must register for and pass some general courses. These are GST courses. If any of these is not passed, the student would not be allowed to graduate. These courses are listed below:

- Study Skills I and II
- Use of English and Communication Skills i & ii
- History and Philosophy of Science
- People and Culture
- Computer Fundamentals
- Logic and Creative thinking
- Nigeria and its neighbours
- The Good Study Guide



*Map of Nigeria showing  
Location of Study Centres*

## Academic Centres

Currently, there are four Schools and one academic centre in the university. These are the Schools of Arts and Social Sciences; Business and Human Resources Management; Education; Science and Technology, and the Centre for Continuing Education and Workplace Training. In addition, there is an international training and research centre called Regional Centre for Training and Development in Open and Distance Learning (RETRIDAL). RETRIDAL was established by the Commonwealth of Learning (COL) to cater for open and distance learning within the West African sub-region. Students are admitted into the various academic programmes in the Schools and Centre. The Schools are headed by Deans whilst the Centres are headed by Directors.

**Core courses:** These are courses that are compulsory for all students in a given programme. These must be passed before a student is allowed to register for courses at the next level or indeed graduate if the course is at the highest level.

**Required Courses:** A student must register for all required courses. Failure in any of these courses does not prevent graduation if the student has passed enough credits for graduation. Failing a required course however will affect the Grade Point Average, (GPA), because all such courses registered will be used in computing the GPA.

**Elective courses:** These are courses available in one's domicile University or from other Schools in the University. While students are advised to work hard and pass their elective courses, they can still graduate if they have sufficient credits to do so even if they failed some electives. They should however note that the number of failed courses will eventually affect their grading, because all such failed courses will be used in computing their GPA.

## Course Registration

Many people have the wrong impression that Open University programmes are part-time in nature. At the National Open University of Nigeria, the regulation permits students to carry full time load. This is particularly possible when for example, the student may not be in employment and feels like completing the first degree programme in four years as in the conventional university. The minimum period required for a first degree with UME qualifications is eight semesters, or six semesters if the student comes with NCE, or ‘A’ Level equivalents. In the same way, the postgraduate work can be carried full time by carrying a full load per Semester. The period for the flexible mode is usually one and half times of the full time mode.

**Minimum credit unit Requirement:** There is a minimum credit weight loading of courses allowed at any particular semester for academic purposes if a student is studying in full time mode. Despite this however, the minimum number of credits one can register for in a Semester in the Open Learning system is still dictated by one’s purse, ability and time available for study.

**Maximum credit unit requirements:** There is also a maximum number of credits the university can allow for registration in any given Semester.

## Programmes at the National Open University of Nigeria

### School of Arts and Social Sciences

#### Master

1. Peace Studies and Conflict Resolution
2. Journalism

#### Bachelor

1. Peace Studies and Conflict Resolution
2. Criminology and Security Studies
3. Law
4. Journalism
5. English Language
6. French & International Studies
7. Islamic Studies
8. Christian Theology

#### Post Graduate Diploma

1. Criminology and Security Studies
2. Christian Theology
3. Journalism
4. Peace Studies & Conflict Resolution

#### Certificate/Diploma Certificates

1. French
2. Islamic Studies
3. Christian Theology

#### Diplomas

1. Islamic Studies
2. Christian Theology
3. Legislative Drafting

### School of Business and Human Resource Management

Master	Bachelor	Post Graduate Diploma
<b>Business Administration</b> <ol style="list-style-type: none"> <li>1. Banking &amp; Finance</li> <li>2. Information Technology</li> <li>3. Corporate Governance</li> <li>4. Financial Management</li> <li>5. Human Resource Management</li> <li>6. E-Commerce</li> <li>7. E-Banking</li> <li>8. E-Library</li> <li>9. E-Learning</li> <li>10. Marketing</li> <li>11. Commonwealth Executive MBA (CEMBA)</li> </ol>	<ol style="list-style-type: none"> <li>1. Hotel &amp; Catering Management</li> <li>2. Tourism Studies</li> <li>3. Cooperative Management</li> <li>4. Entrepreneurial &amp; Small Business Management</li> </ol>	<ol style="list-style-type: none"> <li>1. E-Commerce</li> <li>2. E-Banking</li> <li>3. E-Learning</li> <li>4. E-Library</li> <li>5. Financial Management</li> <li>6. Local Government Management</li> <li>7. Cooperatives Management</li> <li>8. Corporate Governance</li> <li>9. Banking &amp; Finance</li> <li>10. Human Resource Management</li> <li>11. Public Administration</li> <li>12. Hospital Administration &amp; Management</li> </ol>
<b>Public Administration</b> <ol style="list-style-type: none"> <li>1. Human Resource Management</li> <li>2. Hospital Administration &amp; management</li> <li>3. Commonwealth Executive (CEMPA)</li> <li>4. Local Government Administration</li> </ol>		

The tutorials could be in a face -to- face situation, following a pre-arranged time-table and selection of venues. The tutorial could also be by means of chat group using the e-mail and on-line facilities where and when this is available. The tutorial could also be by means of conference phoning or it could be by close circuit television.

In addition to academic tutoring, Counselling services are provided by the university through her professional counsellors. Every study centre has at least two counsellors. Unlike in the conventional universities, the Counsellors are always around to confer with, students who seek needed guidance and counselling on both academic and non-academic issues and concerns. Our students are encouraged, to learn early enough to confide in our Counsellors to assist them with solving problems, difficulties or concerns that border on academic or social issues.

## Learner Support Services

To help our learners study at home and at their convenience, the university provides a range of support services. One of such support is the grading of the periodic tutor marked assignments which are returned by the tutors with useful comments to guide the understanding of the student on the answered questions. Another support is through the provision of tutorial sessions at the university's study centres located across the country. These sessions provide avenues to explore into greater details, some of the topics contained in the printed or electronic materials discussed above.

Qualified tutors who are part-time staff of the university and who are experts in the various fields of study are used to conduct the tutorials. At these tutorial sessions, the topic or topics presented are discussed. Questions are asked and answered. Suggestions, interpretations or explanations of issues at hand are provided. It is also an opportunity to find out the reactions of other colleagues to certain self assessment questions asked in the study material. Sometimes the tutorial facilitator may require a student to do a lead presentation on a topic while others listen as a means of leadership training.

## Centre for Continuing Education and Workplace Training

### Certificate/Diploma

- |                            |                                   |   |
|----------------------------|-----------------------------------|---|
| 1. Business Communications | 9. Multimedia Design & Production | 15. Seed Service & Agro-based Food Technology     |
| 2. Computer Literacy       | 10. Secretarial Studies           | 16. Small Business Management                     |
| 3. Beauty care & Modelling | 11. Hotel Reception & Supervision | 17. Bio-Technology (bee Keeping, Snail, Mushroom) |
| 4. Beauty Therapy          | 12. Hotel Management              |   |
| 5. Entrepreneurship        | 13. Legal Secretarial Studies     |   |
| 6. Financial Management    | 14. Dental Office Practice        |   |
| 7. Marketing               |                                   |   |
| 8. Medical Office Practice |                                   |   |

### Certificate only Programmes

1. Call Centre Skills
2. Cell Phone Repair
3. PC Basics
4. Finance & Accounts
5. Film & Television
6. Production Techniques

## School of Education

### M-Ed

1. Science Education
2. Educational Administration & Planning
3. Educational Technology
4. Mathematics Education
5. Open & Distance Education

### B.Sc. Ed

1. Integrated Science
2. Biology
3. Physics
4. Chemistry
5. Mathematics
6. Agricultural Science
7. Information Technology for Teachers
8. Vocational Technical Education
9. Business Studies

### B.A. Ed

1. Early Childhood Education
2. Primary Education
3. French
4. English

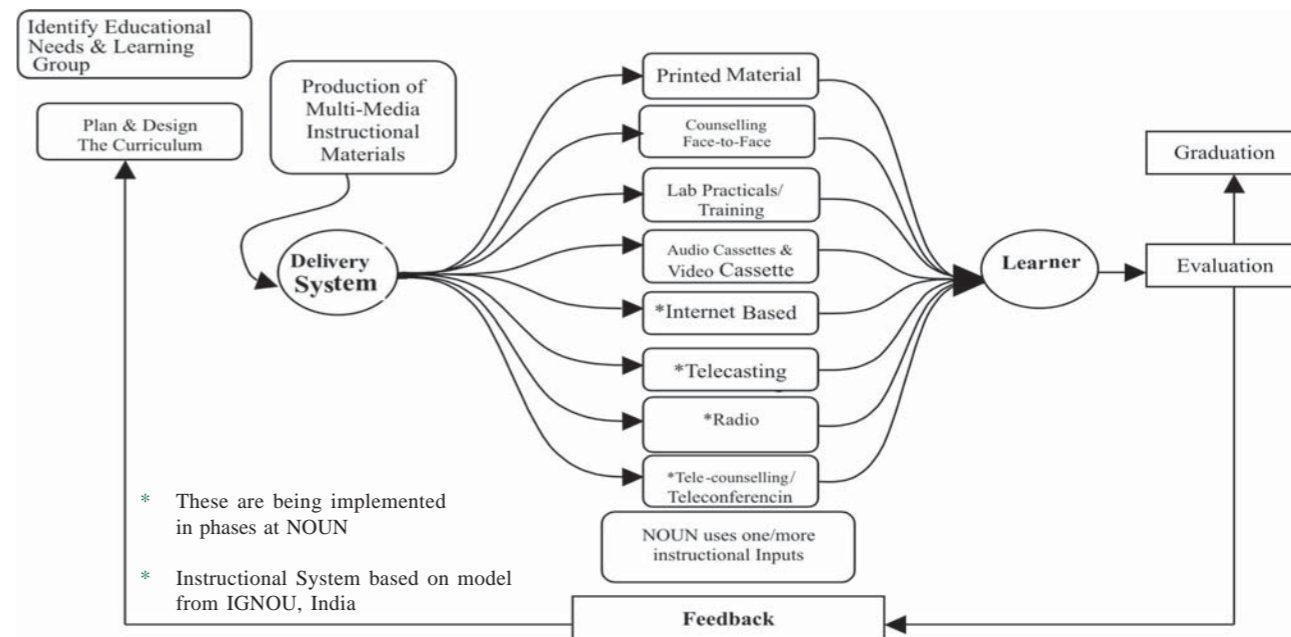
### Post Graduate Diploma

1. Post Graduate Diploma in Education

**School of Science and Technology**

Master	Bachelor	Post Graduate Diploma	Diploma
1. Information Technology (with Internet Applications)	1. Environmental Studies & Resource Management. 2. Nursing(Pre & Post Registration) 3. Communications Technology 4. Computer Science 5. Agricultural Extension and Management 6. Data Management 7. Mathematics 8. Mathematics/Computer Science	1. HIV/AIDS Education & Management 2. Mobile Communications Technology 3. Digital Communication 4. Information Technology 5. Agricultural Extension and Management	1. HIV/AIDS Education & Management

**INSTRUCTIONAL SYSTEM PLAN FOR THE NOUN**



- **CD-ROMs**

Complimentary to the print materials is the CD-ROMs which constitute one of the wonders of ICT. It affords the opportunity of storing vast amount of information and carrying this about. CD-ROM could be both audio and visual.

- **Radio and Television Broadcasts**

Some courses will be broadcast on the Radio and some on the Television. This is usually well organised and arranged by time table which will be widely publicised for all the students concerned. In addition, public enlightenment programmes will be broadcast on radio and television for advocacy.

- **Computer Mediated Learning**

Recent innovations in the field of communication technologies are being exploited to make the delivery of instruction even more effective. As the country becomes more accessible via the internets and more students get access to personal computers, learning at a distance becomes more enabling.

## Student Enrolment

At her first admission exercise, the university admitted over 30,000 applicants but matriculated about 9,500 students distributed into the various academic schools as follows;

Arts and Social Sciences	2,720
Business & Human Resource Management	2,835
Continuing Education & Work Place Training	113
Education	977
Science & Technology	2,250

The projection for 2006 intake is that this number might double to put the total student population at about 20,000

## Instructional Modes

The method of instruction at NOUN is by the distance learning mode within an open learning environment. For clarity, open learning is defined as *'any form of learning in which the process enables individual learners to exercise choice over any one or more of a number of aspects of learning'*. Further more, distance education is defined as *'an educational process in which a significant proportion of the teaching is conducted by someone removed in space and/or time from the learners'*.

Distance education involves the use of a range of media such as print, written correspondence, audio, video, computer based media and networks as well as multimedia facilities for presentation of information and for communication between the university and her students.

This instructional mode provides opportunity for working people to acquire knowledge, skills and techniques which may be relevant to their present work situation or to future career prospects. Distance education thus provides the opportunity to improve people's academic qualifications without giving up their jobs or be removed from their domicile areas. The system also allows for teaching people who are living in whatever location regardless of the types of jobs they do. The system is also flexible in terms of age and time allowing for enrolment at any time and age and at a convenience of pace dictated by the student.

## Instructional Delivery

The NOUN'S Instructional Delivery System is modelled after that of IGNOU, India illustrated overleaf. The NOUN does not provide lectures to students in the normal classroom situation. Instead, the NOUN teaches through the provision of specialised study materials on the basis of self learning. These study materials are given or sent to students who are enrolled for the courses by the postal service. The teaching is provided through the use of the following:

- **Printed materials**  
Printed materials will remain a major instructional mode until such a time that the infrastructure for total on-line teaching will become available. Each course has a study material written specifically for the course and which students are expected to study prior to being examined.
- **Audio tapes, videotapes**  
In addition to printed materials, some of the courses will be recorded on audio-tapes to be played over and over and listened to as often as possible and in whatever environment is convenient for the play backs.